

Job Name/Location:

Tag No.:

Date:

|      |          |            |
|------|----------|------------|
| For: | File     | Resubmit   |
|      | Approval | Other_____ |

PO No.:

Architect: GC:

Engr: Mech:

Rep:

(Company)

(Project Manager)

# PDRYCB500

## Dry Contact; Modbus® Gateway For Indoor Unit



### Electrical:

|              |                           |
|--------------|---------------------------|
| Power Supply | 12 VDC (From Indoor Unit) |
|--------------|---------------------------|

### Environmental Conditions:

|                       |                           |
|-----------------------|---------------------------|
| Operating Temperature | 14 to 158°F               |
| Storage Temperature   | -4 to +176°F              |
| Humidity              | 0 to 98% (Non-condensing) |

### Unit Data:

|                     |                             |
|---------------------|-----------------------------|
| Dimensions (inches) | 4-3/4 W x 4-3/4 H x 1-1/4 D |
|---------------------|-----------------------------|

### Connectivity:

|                   |                               |
|-------------------|-------------------------------|
| LG Communications | 30" Wiring Harness (Included) |
|-------------------|-------------------------------|

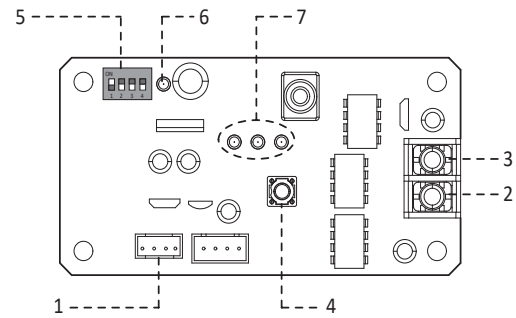
### Standard Features:

- Control indoor unit operation with 3rd party thermostat or controller.
- Registers for: Operation, Mode, Set Temperature, Fan Speed, Indoor-Temperature and Error Alarm.
- Compatible with all Multi V Indoor units.

### Notes:

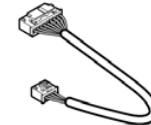
1. LG Wired Remote Controller must be disconnected from the indoor unit for PDRYCB500 communication to work.
2. Must follow installation instructions in the applicable LG installation manual.
3. Modbus is a registered trademark of Schneider Electric USA, Inc.

### Parts Description:



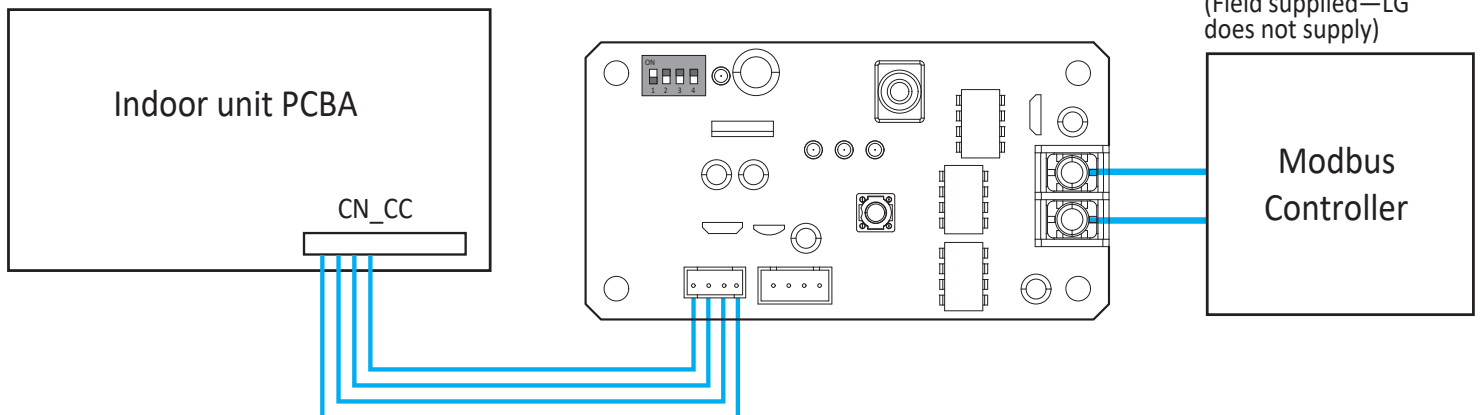
### PCB

- 1. CN-OUT:** Indoor Unit Connector
- 2. BUS-A:** RS-485 (+) Terminal
- 3. BUS-B:** RS-485 (-) Terminal
- 4. SW1:** Reset Switch
- 5. SWDIP:** Setting Address Switch
- 6. LED1:** RS-485 Status LED
- 7. LED (01~03):** Communication Status LED



Cable (One Each)  
(For Connecting to the Indoor Unit)

### Wiring:



Thermostat or Controller  
(Field supplied—LG does not supply)

Job Name/Location: \_\_\_\_\_

**PDRYCB500**

Dry Contact; Modbus® Gateway For Indoor Unit



Tag No.: \_\_\_\_\_

Date: \_\_\_\_\_

PO No.: \_\_\_\_\_

**Specification:**

**1. Modbus Configuration**

- Network: 2 wire RS485
- Mode: Modbus RTU slave
- Baud: 9600
- Parity: None
- Stop bits: 1
- Register Base: 0

**2. Data Registers**

| Register | Name               | Range     | Notes                                       |
|----------|--------------------|-----------|---|
| 1        | Operation          | 0 ~ 1     | 0: Stop<br>1: Run                           |
| 30003    | Indoor Temperature | 100 ~ 400 | Degrees C × 10                              |
| 30100    | Error Alarm        | 0 ~ 1     | 0 No Error<br>1: Error                      |
| 40001    | Set Run Mode       | 0 ~ 4     | 0: Cooling<br>2: Fan<br>3: AI<br>4: Heating |
| 40002    | Set Temperature    | 180 ~ 300 | Degrees C × 10                              |
| 40015    | Set Fan Speed      | 1 ~ 3     | 1: Low<br>2: Middle<br>3: High              |